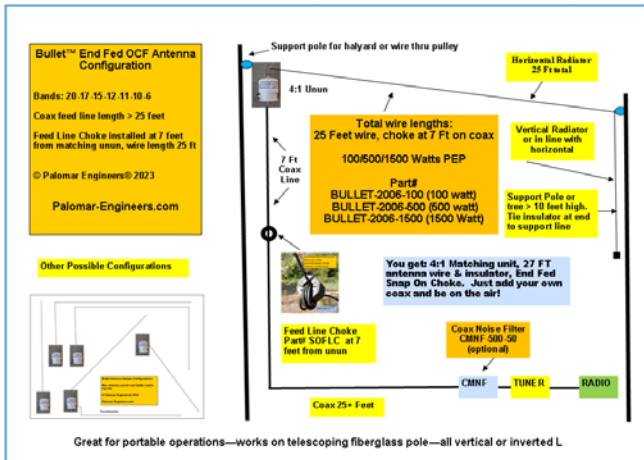
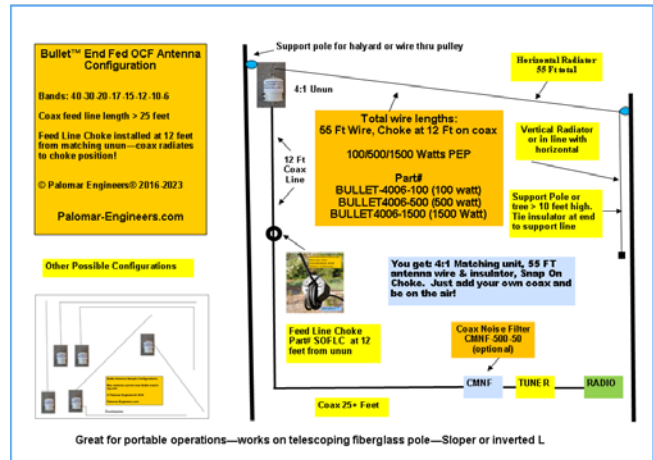


## BULLET™ END FED ANTENNAS 160-6 Meter Options 100/500/1500 Watts

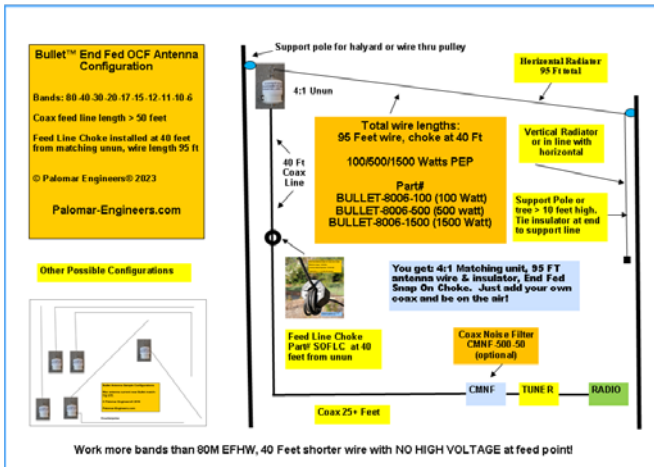
### SHORTER, SAFER, MORE BANDS THAN EFHW



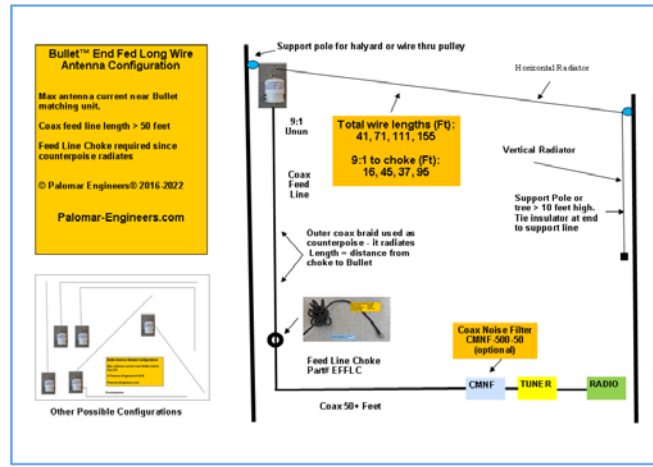
**BULLET-2006-100/500/1500**  
20-17-15-12-11-10-6 Meters  
Wire: 25 Ft, Choke: 7 Ft



**BULLET-4006-100/500/1500**  
40-30-20-17-15-12-11-10-6 Meters  
Wire: 55 Ft, Choke: 12 Ft



**BULLET-8006-100/500/1500**  
80-40-30-20-17-15-12-11-10-6 Meters  
Wire: 95 Ft, Choke: 40 Ft



**BAS-71-100/500/1500**  
80\*-40-30-20-17-15-12-11-10-6 Meters (\*tuner)  
Wire: 71 Ft, Choke: 42 Ft

Bullet end fed antennas are shorter than conventional dipoles, yet deliver superior performance on many bands using the radiating coax as part of the antenna. They come in a variety of power levels, and work great for portable or permanent installations. Thousands in use world-wide! Selected models available at Ham Radio Outlet and all available on company website where full details on these antennas and many accessories are shown.