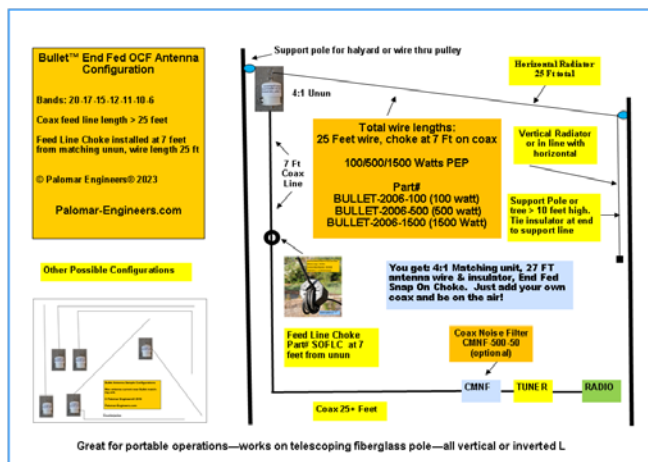
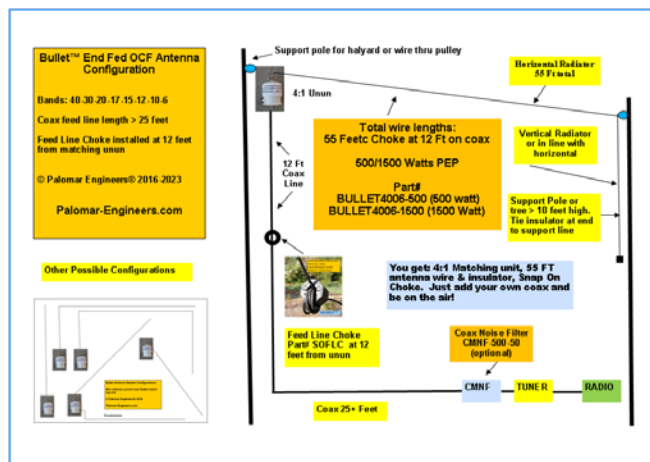


PRODUCT INFO
HF Wire Antennas
BULLET™ End Ends, Loops,
Off Center Fed Dipoles
100/500/1500/5000 Watts

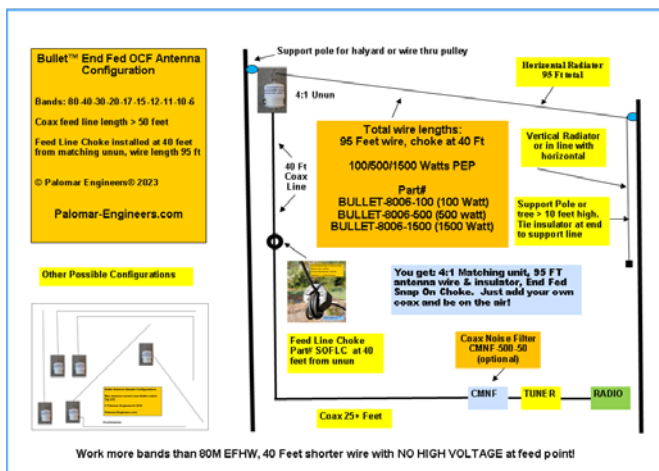
BULLET END FED ANTENNAS



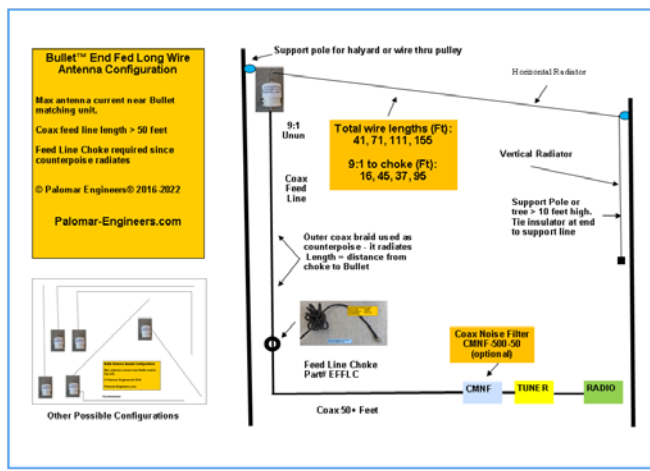
BULLET-2006-100/500/1500
20-17-15-12-11-10-6 Meters
Wire: 25 Ft, Choke: 7 Ft



BULLET-4006-100/500/1500
40-30-20-17-15-12-11-10-6 Meters
Wire: 55 Ft, Choke: 12 Ft



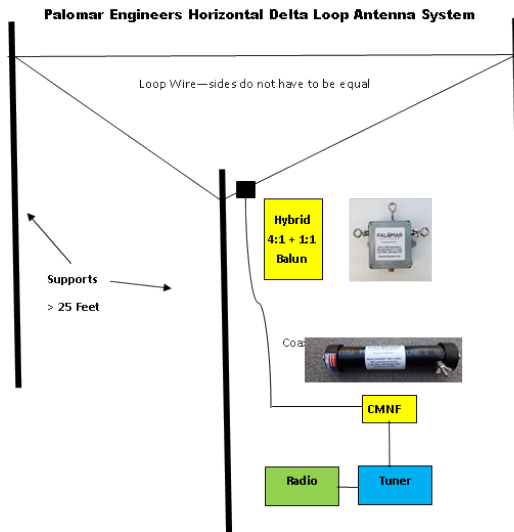
BULLET-8006-100/500/1500
80-40-30-20-17-15-12-11-10-6 Meters
Wire: 95 Ft, Choke: 40 Ft



BAS-71-100/500/1500
80*-40-30-20-17-15-12-11-10-6 Meters (*tuner)
Wire: 71 Ft, Choke: 42 Ft

Bullet end fed antennas are shorter than conventional dipoles, yet deliver superior performance on many bands using the radiating coax as part of the antenna. They come in a variety of power levels, and work great for portable or permanent installations. Thousands in use world-wide!

LOOP ANTENNAS



Loop Antennas
Typical Configuration
(3 or more sides)
PAL-LOOP16010 (576', 160-10 meters)
PAL-LOOP8010 (288', 80-10 meters)
PAL-LOOP4010 (144', 40-10 meters)
Hybrid 4:1 + 1:1 available in 500, 1500 & 5000 Watts models
Use Coax Noise Filter (CMNF) to reduce receive common mode noise
© Palomar Engineers® 2016-2022

PAL-LOOP2006-500/1500/5000
20-17-15-12-11-10-6 Meters

Wire: 72 Ft

PAL-LOOP4010-500/1500/5000
40-30-20-17-15-12-11-10-6 Meters

Wire: 144 Ft

PAL-LOOP8010-500/1500/5000
80-40-30-20-17-15-12-11-10-6 Meters

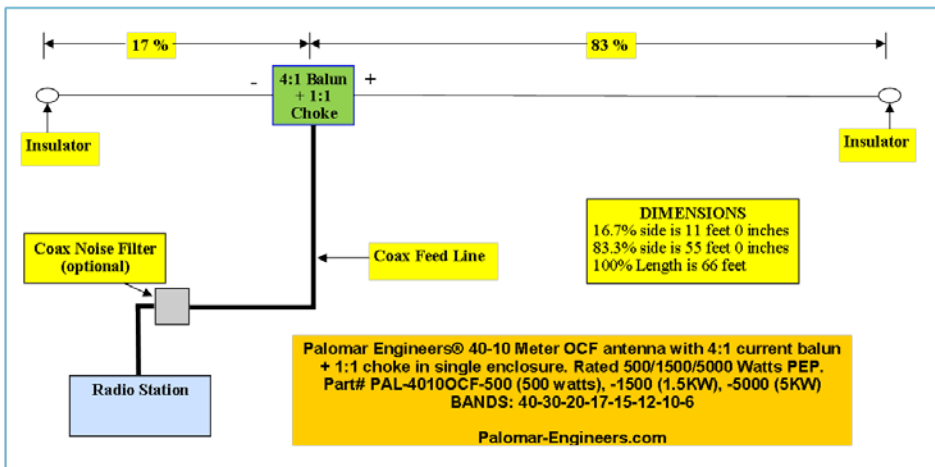
Wire: 288 Ft

PAL-LOOP16010-500/1500/5000
160-80-40-30-20-17-15-12-11-10 Meters
Wire: 576 Ft

Each has a hybrid 4:1 + 1:1 balun and may be run horizontal or vertical with 3 or more sides.

Palomar loop antennas are all made with Hybrid 4:1 + 1:1 transformers with stainless steel fittings and wire meant to last years in the field. Loop antennas are quieter on receive than conventional dipoles or end fed antennas and have substantial gain on the higher bands where they are many wavelengths long. Caution: Once you try a loop antenna and experience how easy it is to use on many bands, it is hard to go back to a conventional dipole or a beam antenna that needs to be rotated in a certain direction to make a contact!

OFF CENTER FED ANTENNAS



PAL-OCF2006-500/1500/5000
20-17-15-12-11-10-6 Meters
Wire: 7 + 25 Ft

PAL-OCF4010-500/1500/5000
40-30-20-17-15-12-11-10-6 Meters
Wire: 11 + 55 Ft

PAL-OCF8010-500/1500/5000
80-40-30-20-17-15-12-11-10-6 Meters
Wire: 40 + 95 Ft

Note: all Palomar OCF antennas cover 15 meters and the WARC bands which are missed by competing brands. Available in 500, 1500 and 5000 watt PEP and designed for high duty cycle operation and digital modes.

Each antenna has a hybrid 4:1 + 1:1 balun and may be installed horizontal, as a sloper or inverted Vee or drop the ends vertical if needed.

Selected models available at Ham Radio Outlet and all available on company website
See company website for full details on these antennas and many accessories

Copyright Palomar Engineers®, Inc., 1965-2023
Palomar-Engineers.com